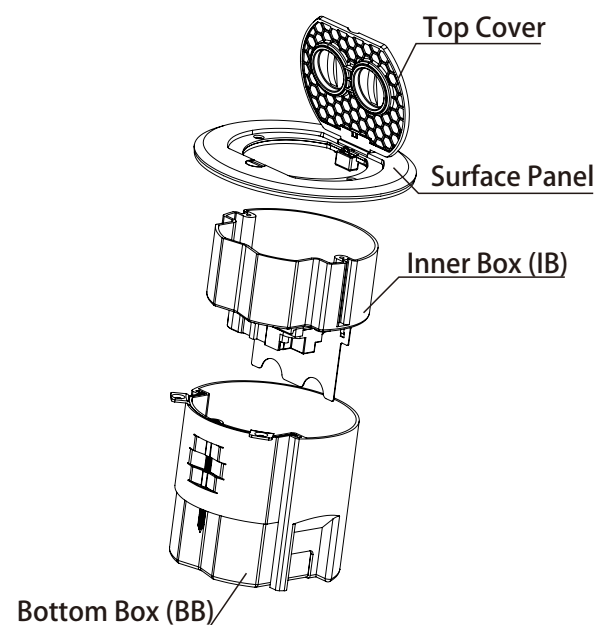




RRFB Series Recessed Wood and Access Floor Operation Manual

IMPORTANT: Read all instructions before installing the RRFB series.

Product Diagram



Safety Guideline

1. For indoor use only.
2. Only licensed professional electrical contractors should install the floor box.
3. Do not insert foreign objects into the socket.
4. Avoid liquids spills into the outlet.
5. If the product malfunctions, immediately turn off the power source and call a professional electrical contractor for help.

Product Features

1. For raised access floor installation.
2. Made of brass alloy, featuring a stylish appearance and corrosion resistance.
3. The top cover features a precision-engineered slot, designed for a rotational opening mechanism.
4. Recessed duplex receptacle and low voltage communication devices (communication devices not included)

Requirements for Installation

- Jig saw
- Phillips head screwdriver
- Flat head screwdriver

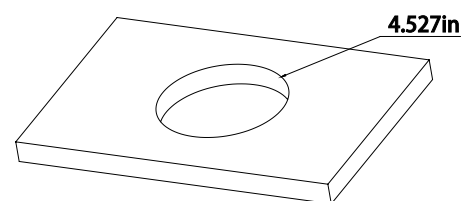
Included accessories:

1. ST3.5x16 flat head self-tapping screw (x2)
2. M3x8 flat head Phillips screw (x4)
3. M4x50 Phillips countersunk head screw (x2)
4. Rubber grommet (x2)

Installation Instructions

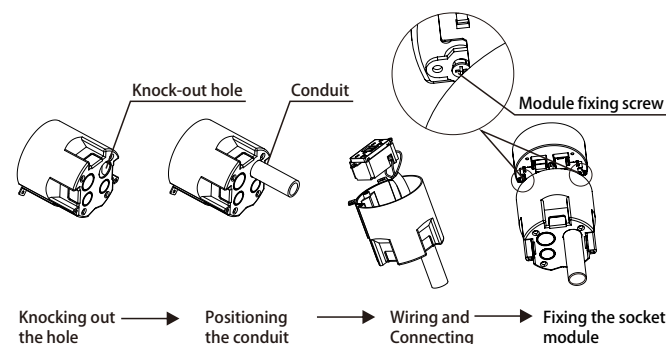
1. Cut-Out Opening

Make a circular grommet hole on the desired surface. The diameter is 4.527in .



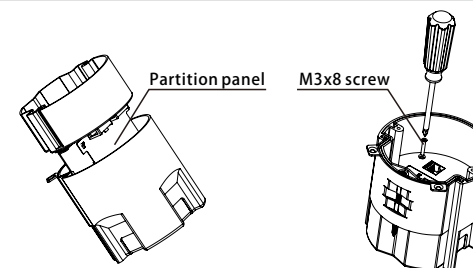
2. Wiring

1. Knock out the hole in the bottom box.
2. Position the conduit, and then thread the cables.
3. Connect the wiring to the socket module with provided screws.
4. Install the socket module to the Inner Box.



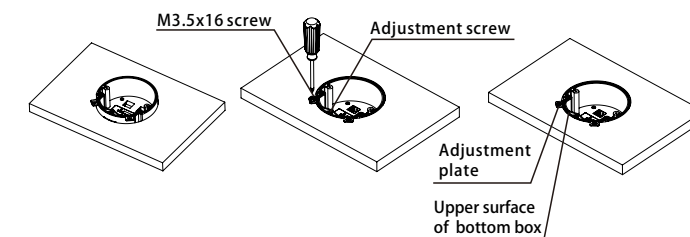
3. Install the Inner Box (IB).

Place the inner box into the bottom box, align and slot the partition panel into its corresponding position in the bottom box, and secure the inner box in place with four M3x8 screws.



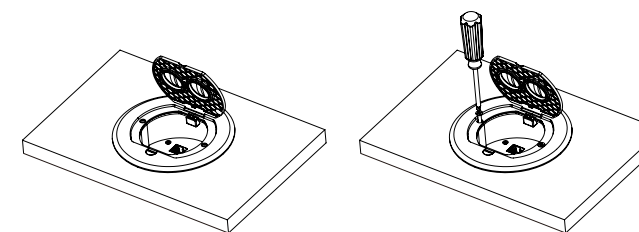
4. Install the Bottom Box (BB)

Place the bottom box into the grommet hole and secure it with the M3.5x16 screws. Rotate the screws clockwise to adjust, ensuring the upper surface of the bottom box is flush with the adjustment plate.



5. Panel Installation

Position the panel component on top of the base box, aligning it with the holes, and fasten using M4X50 screws. Once this is done, the installation is considered complete.



Usage Instructions

1. Opening the Product

1. Take out one of the plugs by turning the slot with a coin or thick screwdriver.
2. Open the cover with a flat head screwdriver
3. Thread the power cord through the rubber grommet, then through the cover and into the box.
4. Lock the cover with screw driver.
5. Install the rubber grommet previously placed on the power cord onto the edge of the hole to protect the wire.

