
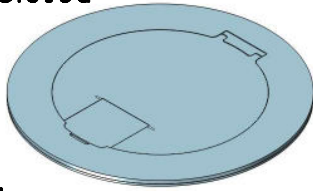


MOI6-REC-P6-C4

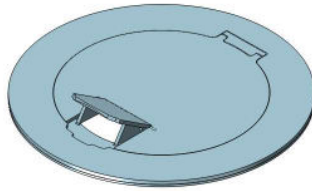
Ordering Information	Description:
Slab Thickness:	 LEW ELECTRIC FITTINGS COMPANY
Single Rec: <input type="checkbox"/> 15A <input type="checkbox"/> 20A	
Duplex Rec: <input type="checkbox"/> 15A <input type="checkbox"/> 20A	
Cover Type:	
Proprietary and Confidential The information contained in this drawing is the sole property of NOCOM. Any reproduction in part or as a whole without the written permission of NOCOM is prohibited.	877-537-2019 www.lewelectric.com
	DWG. No. MOI6-REC-P6-C4

Articulated Hinge Cover with Cable Exit Door (AHC-CED)

Cover Fully Closed



Cover CED Open



Cover Fully Open

Cover Finishes

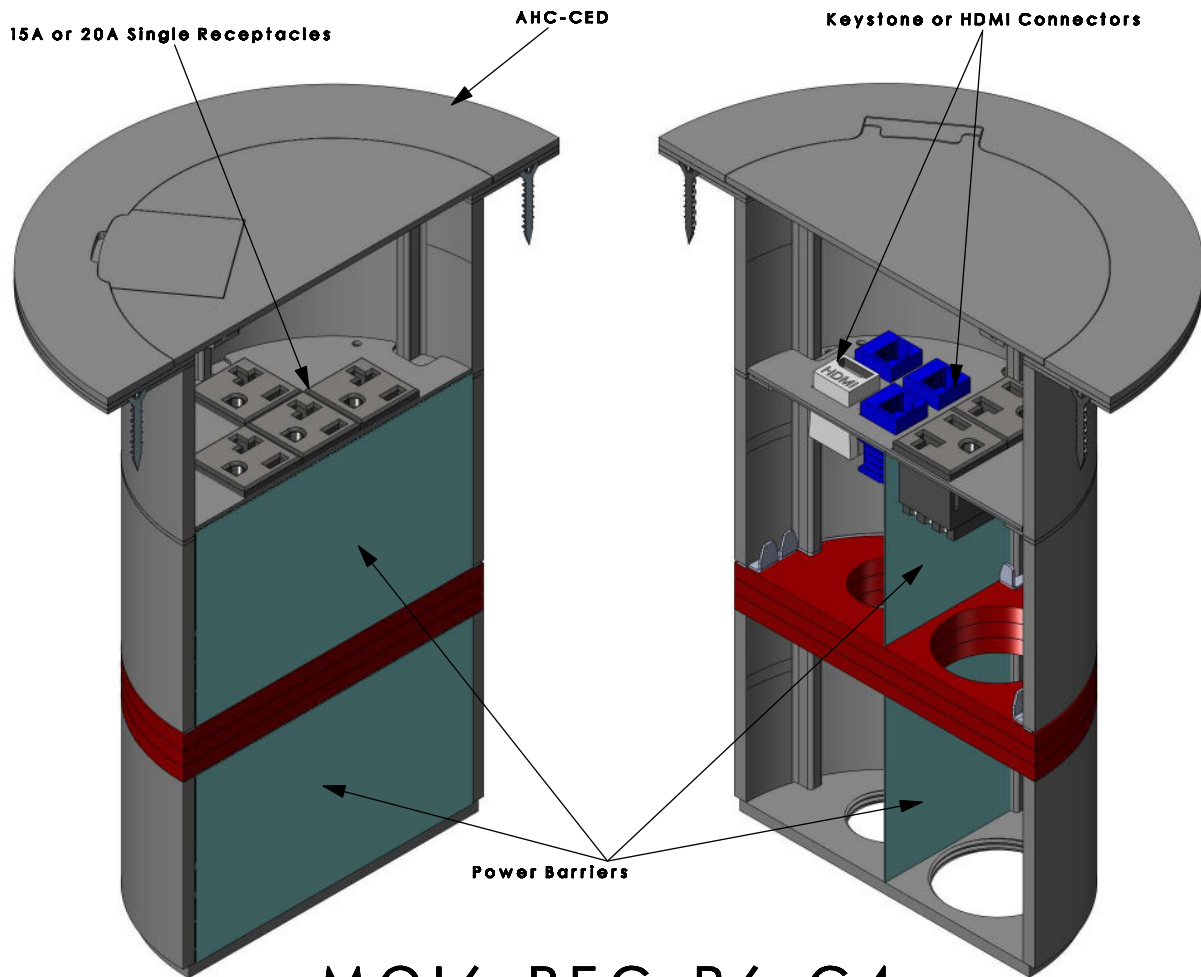
Standard = Brushed Stainless Steel
*Custom = Brushed Brass

or


Black Matte

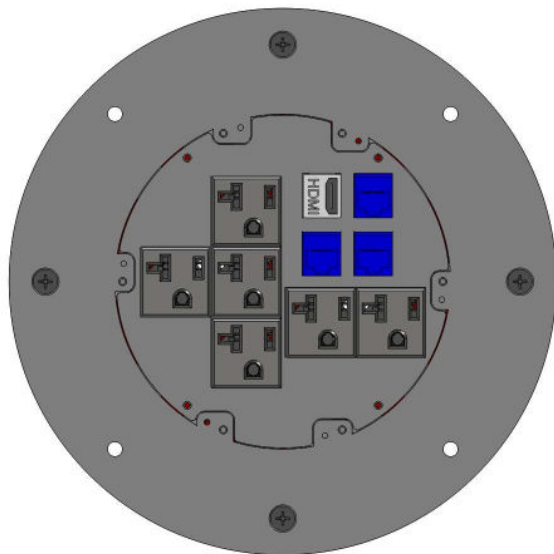
*Additional cost may apply

*Other colours/finishes available
upon request



MOI6-REC-P6-C4
(Isometric Cross Section Views)

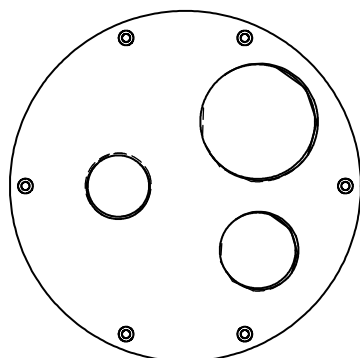
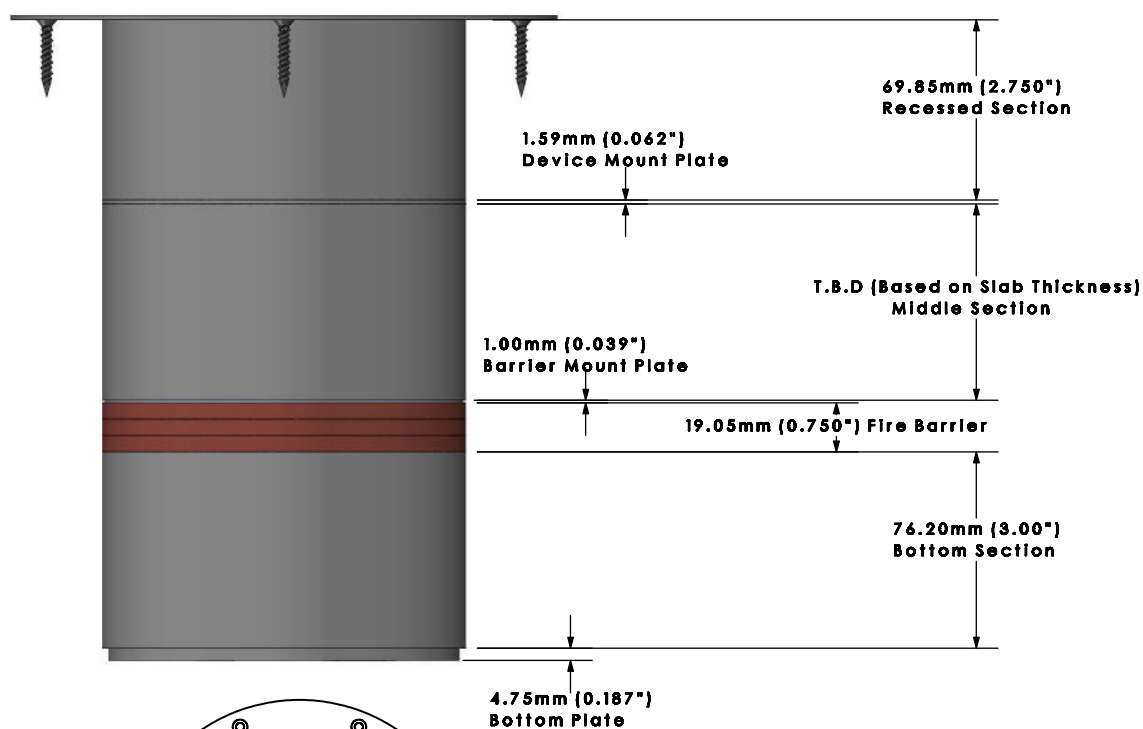
Ordering Information	Description:
Slab Thickness:	 LEW ELECTRIC FITTINGS COMPANY
Single Rec: <input type="checkbox"/> 15A <input type="checkbox"/> 20A	
Duplex Rec: <input type="checkbox"/> 15A <input type="checkbox"/> 20A	
Cover Type:	
Proprietary and Confidential	877-537-2019 www.lewelectric.com
The information contained in this drawing is the sole property of NOCOM. Any reproduction in part or as a whole without the written permission of NOCOM is prohibited.	DWG. No. MOI6-REC-P6-C4



Configuration View


Power: x6

Comm: x4



Removable Bottom Plate

- NPS 0.750"
- NPS 1.000"
- NPS 1.500"

Ordering Information	Description:
Slab Thickness:	 LEW ELECTRIC FITTINGS COMPANY
Single Rec: <input type="checkbox"/> 15A <input type="checkbox"/> 20A	
Duplex Rec: <input type="checkbox"/> 15A <input type="checkbox"/> 20A	
Cover Type:	
Proprietary and Confidential	877-537-2019 www.lewelectric.com
The information contained in this drawing is the sole property of NOCOM. Any reproduction in part or as a whole without the written permission of NOCOM is prohibited.	DWG. No. MOI6-REC-P6-C4