
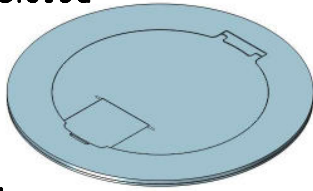


MOI6-REC-P4-C8

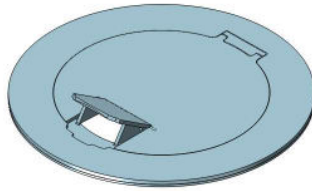
Ordering Information		Description:
Slab Thickness:		 LEW ELECTRIC FITTINGS COMPANY
Single Rec: <input type="checkbox"/> 15A <input type="checkbox"/> 20A		
Duplex Rec: <input type="checkbox"/> 15A <input type="checkbox"/> 20A		
Cover Type:		
Proprietary and Confidential		877-537-2019    www.lewelectric.com
The information contained in this drawing is the sole property of NOCOM. Any reproduction in part or as a whole without the written permission of NOCOM is prohibited.		DWG. No. MOI6-REC-P4-C8

# Articulated Hinge Cover with Cable Exit Door (AHC-CED)

Cover Fully Closed



Cover CED Open



Cover Fully Open

## Cover Finishes

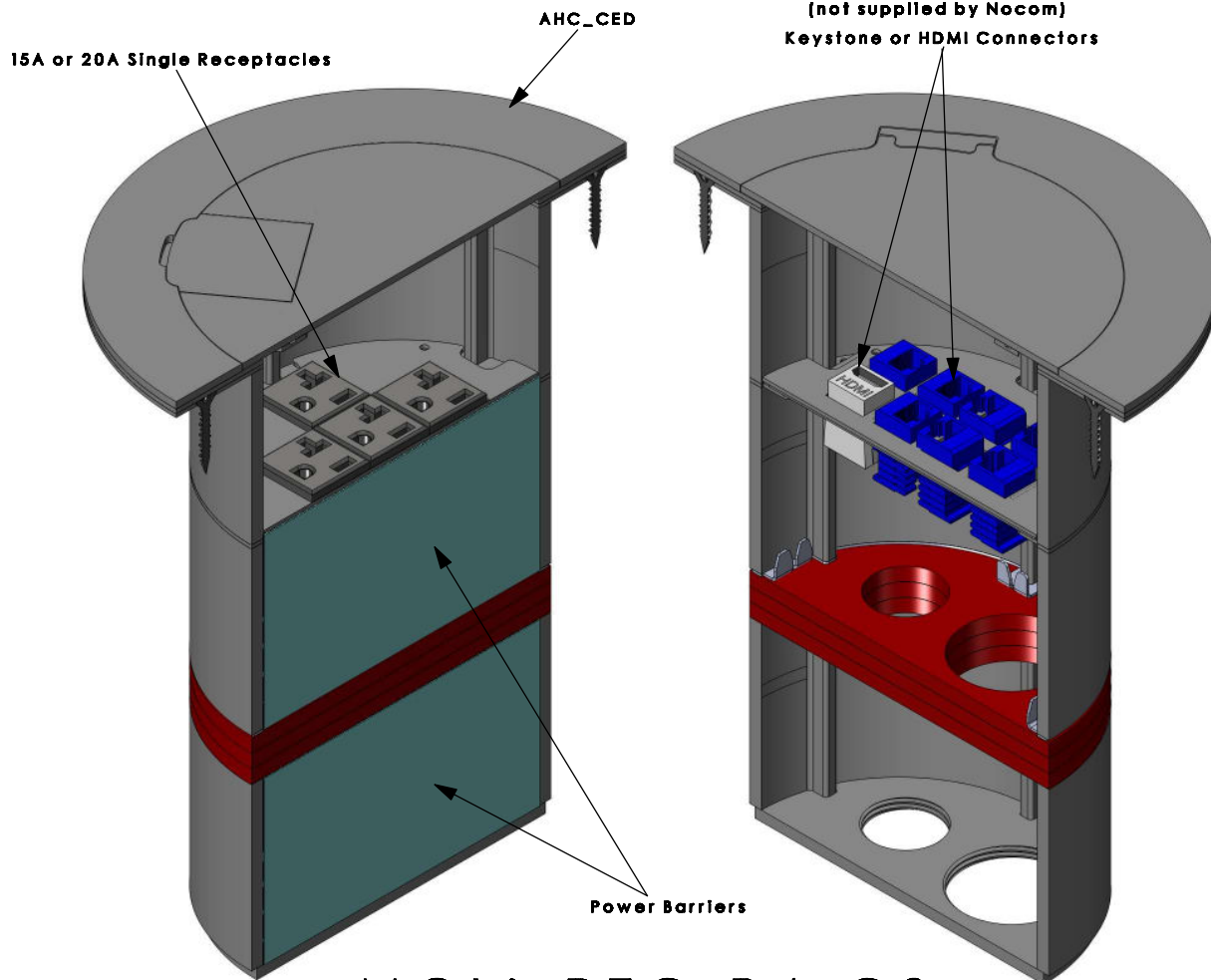
Standard = Brushed Stainless Steel  
\*Custom = Brushed Brass

or


Black Matte

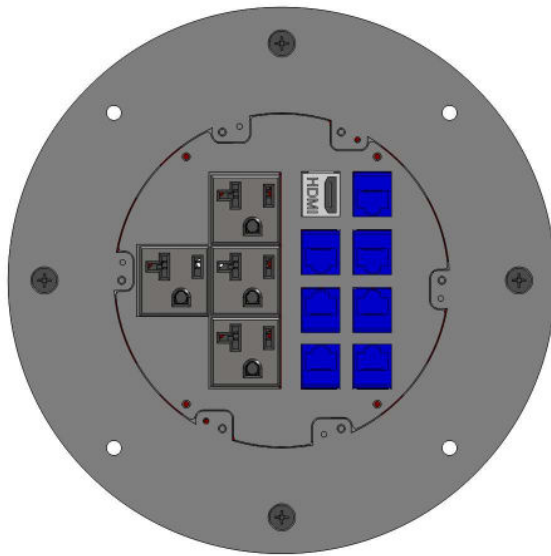
\*Additional cost may apply

\*Other colours/finishes available  
upon request



## MOI6-REC-P4-C8 (Isometric Cross Section Views)

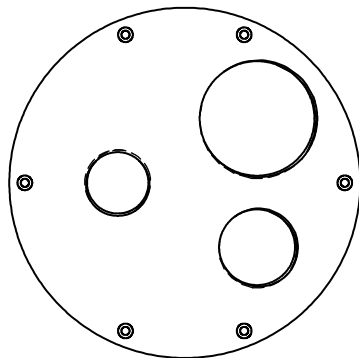
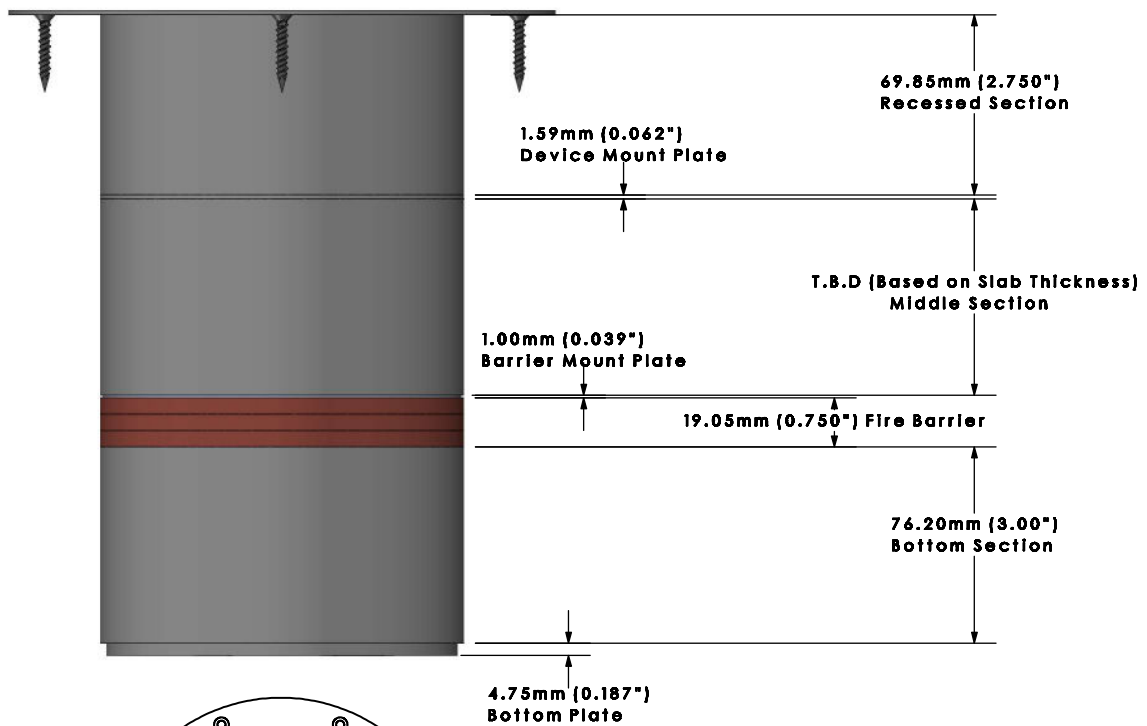
Ordering Information	Description:
Slab Thickness:	 <b>LEW ELECTRIC FITTINGS COMPANY</b>
Single Rec: <input type="checkbox"/> 15A <input type="checkbox"/> 20A	
Duplex Rec: <input type="checkbox"/> 15A <input type="checkbox"/> 20A	
Cover Type:	
Proprietary and Confidential	877-537-2019 <a href="http://www.lewelectric.com">www.lewelectric.com</a>
The information contained in this drawing is the sole property of NOCOM. Any reproduction in part or as a whole without the written permission of NOCOM is prohibited.	DWG. No. <b>MOI6-REC-P4-C8</b>



## Configuration View

Power: x4

Comm: x8




## Removable Bottom Plate

- NPS 0.750"

- NPS 1.000"

- NPS 1.500"

Ordering Information	Description:
Slab Thickness:	 <b>LEW ELECTRIC</b> <b>FITTINGS COMPANY</b>
Single Rec: <input type="checkbox"/> 15A <input type="checkbox"/> 20A	
Duplex Rec: <input type="checkbox"/> 15A <input type="checkbox"/> 20A	
Cover Type:	
Proprietary and Confidential	877-537-2019 www.lewelectric.com
The information contained in this drawing is the sole property of NOCOM. Any reproduction in part or as a whole without the written permission of NOCOM is prohibited.	DWG. No. MOI6-REC-P4-C8