
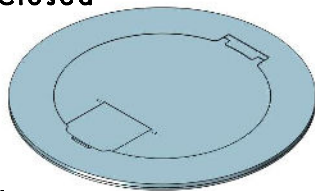


MOI6 - REC - P4 - AV - C2

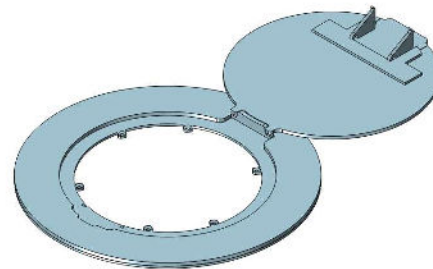
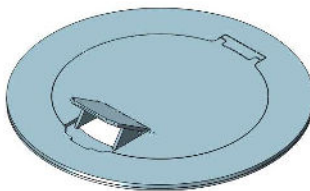
| Ordering Information | Description: PT-P6-AV-C2 |
|--|---|
| Slab Thickness: |  LEW ELECTRIC FITTINGS COMPANY |
| Single Rec: <input type="checkbox"/> 15A <input type="checkbox"/> 20A | |
| Duplex Rec: <input type="checkbox"/> 15A <input type="checkbox"/> 20A | |
| Cover Type: | |
| Proprietary and Confidential | 877-537-2019 www.lewelectric.com |
| The information contained in this drawing is the sole property of NOCOM. Any reproduction in part or as a whole without the written permission of NOCOM is prohibited. | DWG. No. MOI6-REC-P4-AV-C2 |

Articulated Hinge Cover with Cable Exit Door (AHC-CED)

Cover Fully Closed



Cover CED Open



Cover Fully Open

Cover Finishes

Standard = Brushed Stainless Steel

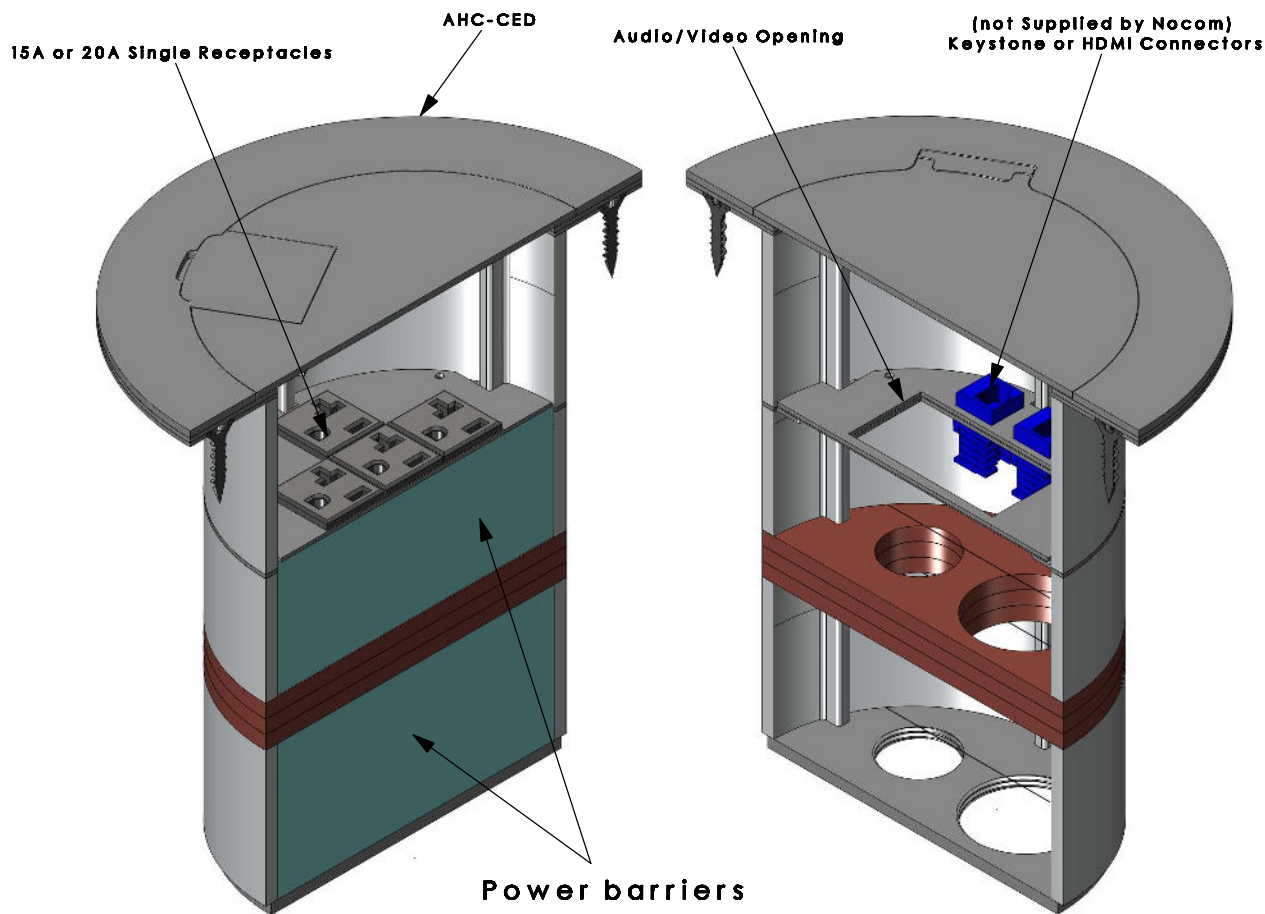
*Custom = Brushed Brass

or


Black Matte

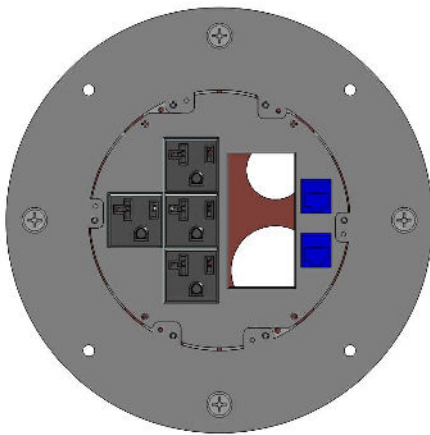
*Additional cost may apply

*Other colours/finishes available upon request



MOI6 - REC - P4 - DP - C2
(Isometric Cross Section Views)

| Ordering Information | Description: |
|---|--|
| Slab Thickness: |  LEW ELECTRIC FITTINGS COMPANY 877-537-2019 www.lewelectric.com |
| Single Rec: <input type="checkbox"/> 15A <input type="checkbox"/> 20A | |
| Duplex Rec: <input type="checkbox"/> 15A <input type="checkbox"/> 20A | |
| Cover Type: | |
| Proprietary and Confidential | DWG. No. MOI6-REC-P4-AV-C2 |
| The information contained in this drawing is the sole property of NOCOM. Any reproduction in part or as a whole without the written permission of NOCOM is prohibited. | |

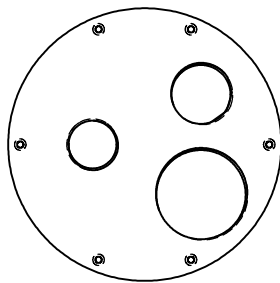
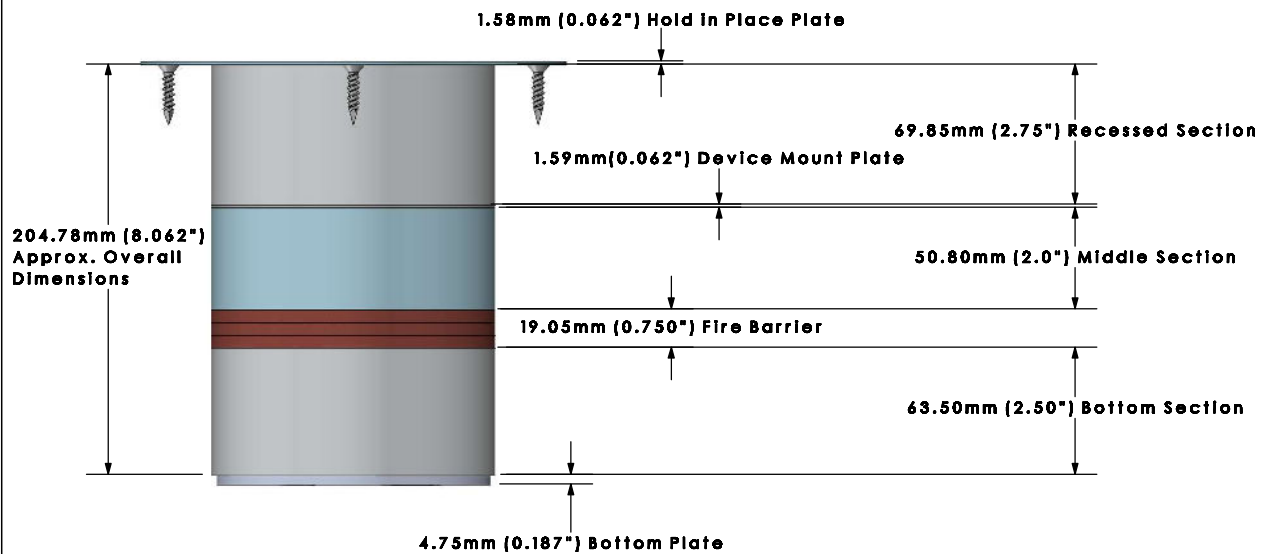


Configuration View

Power: x4

A/V or DP: x1

Comm: x2




Removable Bottom Plate

- NPT 0.75"

- NPT 1.0"

- NPT 1.50"

| Ordering Information | Description: |
|--|--|
| Slab Thickness: |  LEW ELECTRIC FITTINGS COMPANY |
| Single Rec: <input type="checkbox"/> 15A <input type="checkbox"/> 20A | |
| Duplex Rec: <input type="checkbox"/> 15A <input type="checkbox"/> 20A | |
| Cover Type: | |
| Proprietary and Confidential | 877-537-2019 www.lewelectric.com |
| The information contained in this drawing is the sole property of NOCOM. Any reproduction in part or as a whole without the written permission of NOCOM is prohibited. | |
| | DWG. No. MOI6-REC-P4-AV-C2 |