
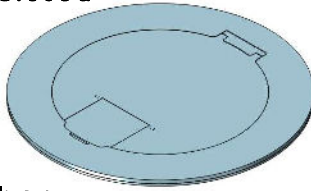


MOI6-REC-P2-DP-C6

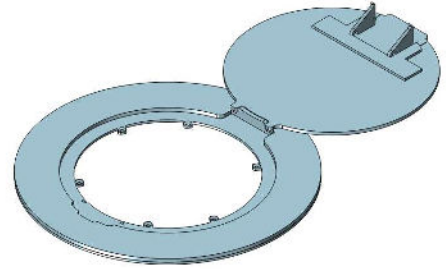
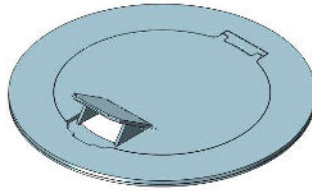
Ordering Information	Description:
Slab Thickness:	 <b>LEW ELECTRIC</b> <b>FITTINGS COMPANY</b>
Single Rec: <input type="checkbox"/> 15A <input type="checkbox"/> 20A	
Duplex Rec: <input type="checkbox"/> 15A <input type="checkbox"/> 20A	
Cover Type:	
<b>Proprietary and Confidential</b> The information contained in this drawing is the sole property of NOCOM. Any reproduction in part or as a whole without the written permission of NOCOM is prohibited.	<b>877-537-2019</b> <a href="http://www.lewelectric.com">www.lewelectric.com</a>
	<b>DWG. No.</b> <b>MOI6-REC-P2-DP-C6</b>

# Articulated Hinge Cover with Cable Exit Door (AHC-CED)

Cover Fully Closed



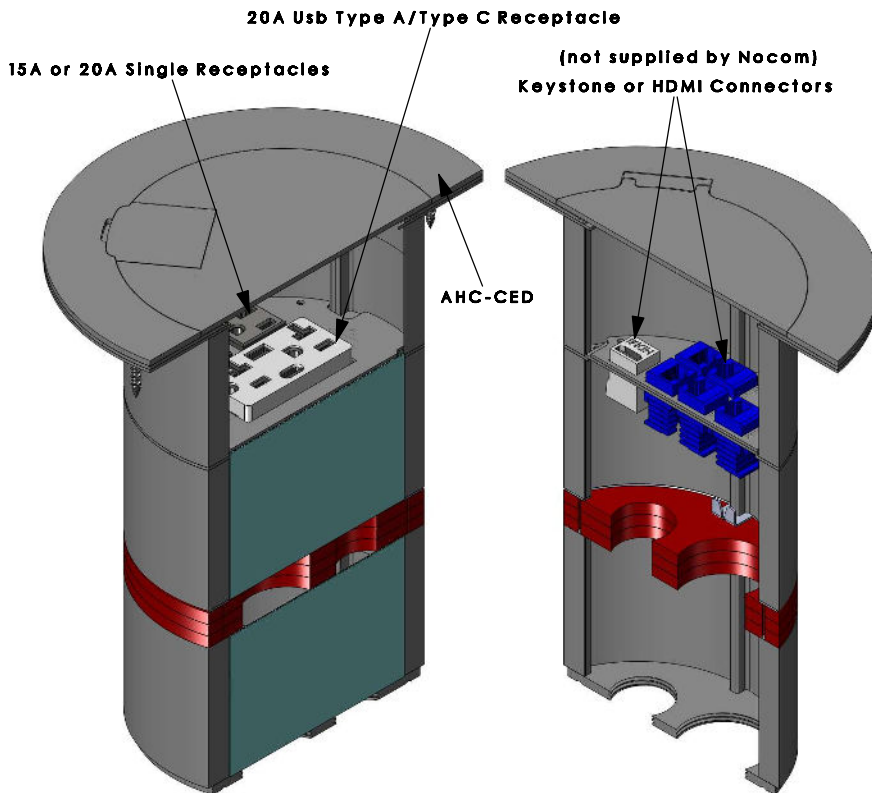
Cover CED Open



Cover Fully Open

## Cover Finishes

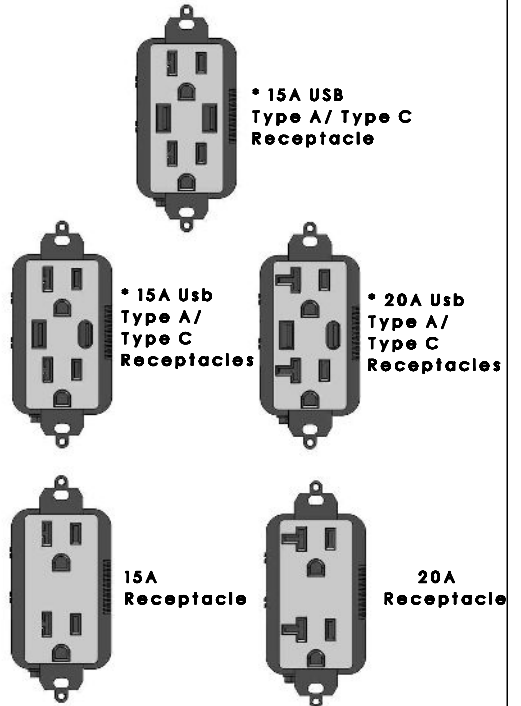
- Standard = Brushed Stainless Steel
- \*Custom = Brushed Brass  
or  
Black Matte
- \*Additional cost may apply
- \*Other colours/finishes available upon request




**MOI6-REC-P2-DP-C6**

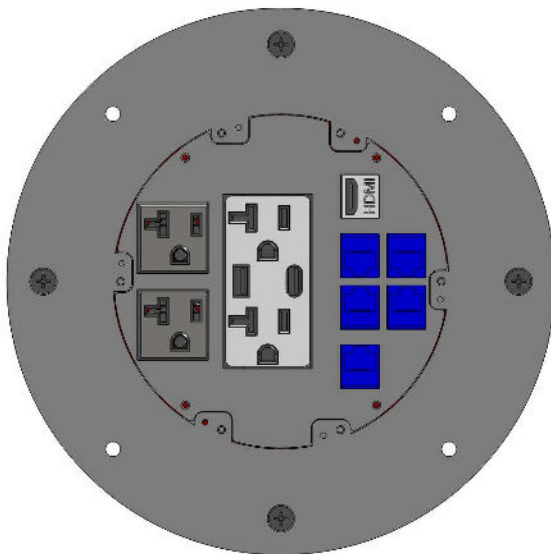
(Isometric Cross Section Views)

## Receptacle Options



\* Additional costs will apply.

Ordering Information	Description:
Slab Thickness:	 <b>LEW ELECTRIC FITTINGS COMPANY</b>
Single Rec: <input type="checkbox"/> 15A <input type="checkbox"/> 20A	
Duplex Rec: <input type="checkbox"/> 15A <input type="checkbox"/> 20A	
Cover Type:	
Proprietary and Confidential	877-537-2019 <a href="http://www.lewelectric.com">www.lewelectric.com</a>
The information contained in this drawing is the sole property of NOCOM. Any reproduction in part or as a whole without the written permission of NOCOM is prohibited.	DWG. No. <b>MOI6-REC-P2-DP-C6</b>

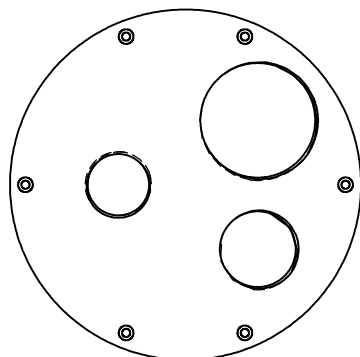
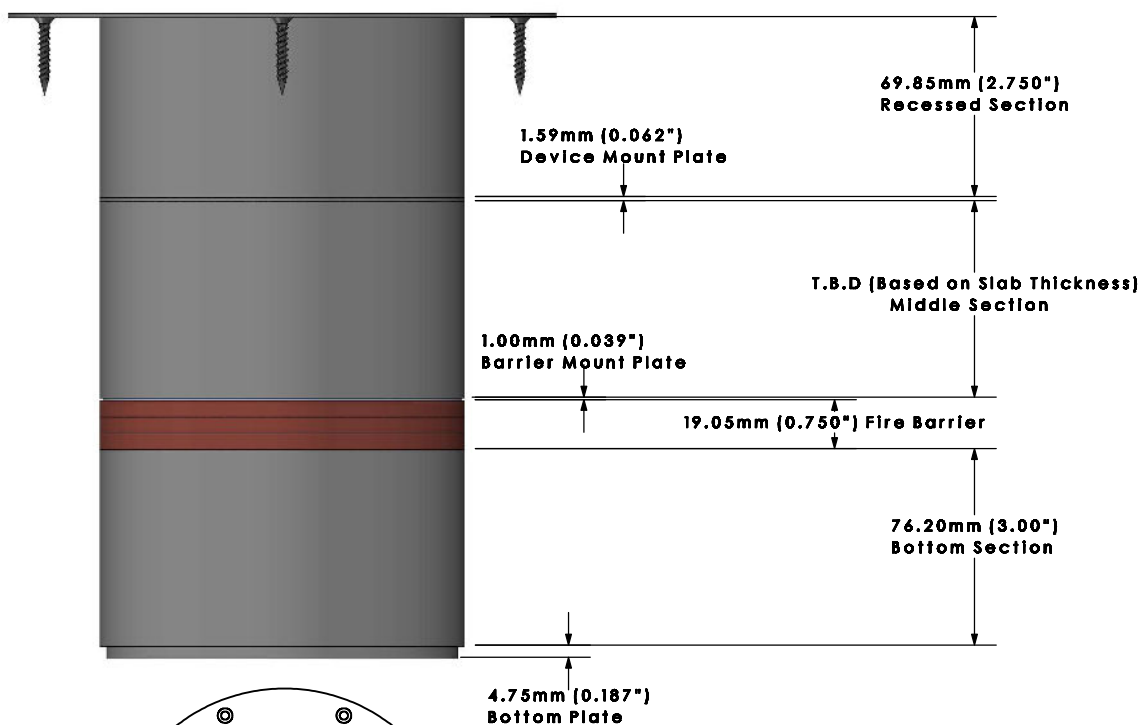


## Configuration View

Power: x2


DP: x1

Comm: x6



## Removable Bottom Plate

- NPS 0.750"
- NPS 1.000"
- NPS 1.500"

Ordering Information	Description:
Slab Thickness:	 <b>LEW ELECTRIC FITTINGS COMPANY</b>
Single Rec: <input type="checkbox"/> 15A <input type="checkbox"/> 20A	
Duplex Rec: <input type="checkbox"/> 15A <input type="checkbox"/> 20A	
Cover Type:	
Proprietary and Confidential	877-537-2019 www.lewelectric.com
The information contained in this drawing is the sole property of NOCOM. Any reproduction in part or as a whole without the written permission of NOCOM is prohibited.	DWG. No. MO16-REC-P2-DP-C6