
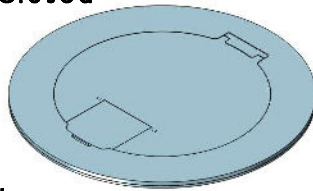


MOI4-RES-REC-P2-C6

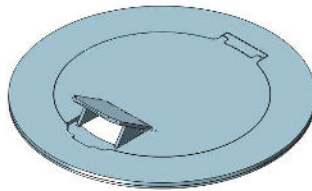
Ordering Information		Description:
Slab Thickness:		 LEW ELECTRIC FITTINGS COMPANY
Single Rec: <input type="checkbox"/> 15A <input type="checkbox"/> 20A		
Duplex Rec: <input type="checkbox"/> 15A <input type="checkbox"/> 20A		
Cover Type:		
Proprietary and Confidential		877-537-2019 www.lewelectric.com
The information contained in this drawing is the sole property of NOCOM. Any reproduction in part or as a whole without the written permission of NOCOM is prohibited.		DWG. No. MOI4-RES-REC-P2-C6

Articulated Hinge Cover with Cable Exit Door (AHC-CED)

Cover Fully Closed



Cover CED Open



Cover Fully Open

Cover Finishes

Standard = Brushed Stainless Steel
*Custom = Brushed Brass

or

Black Matte

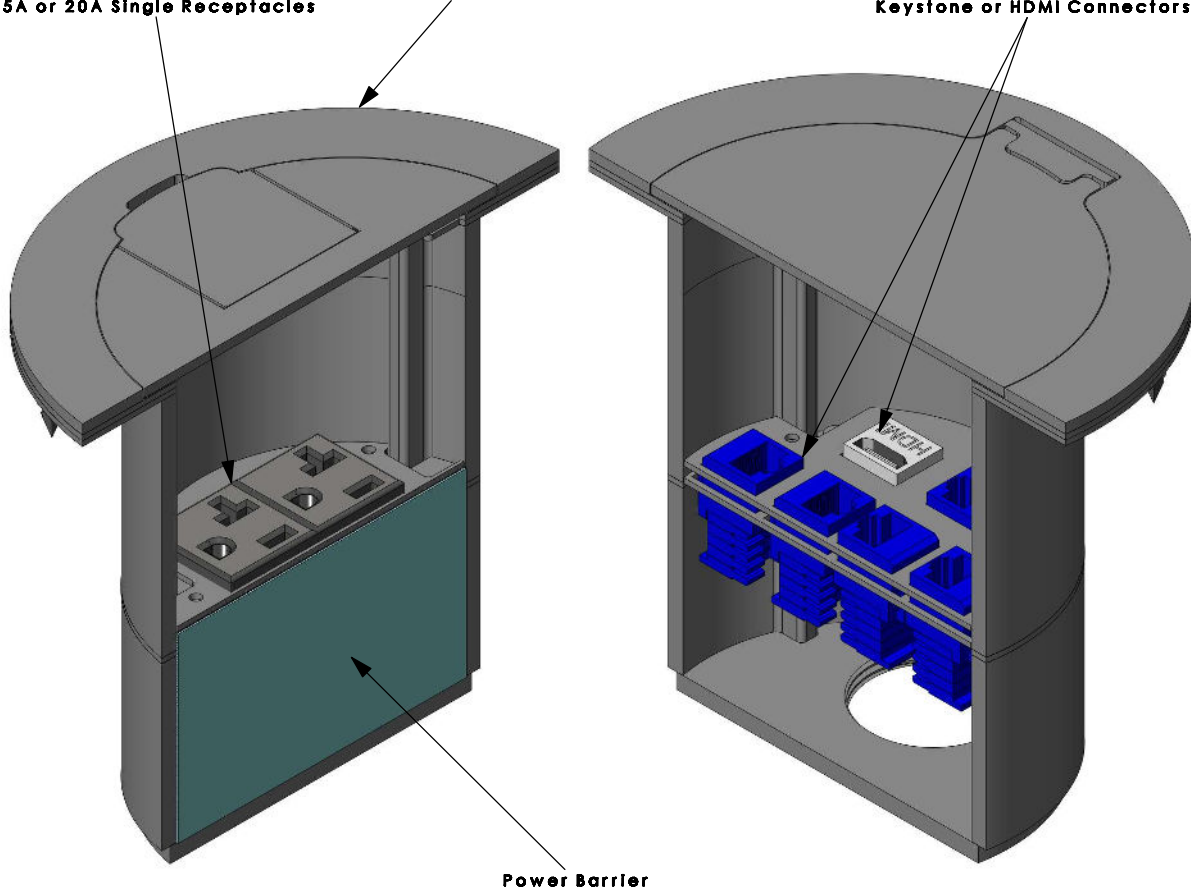
*Additional cost may apply

*Other colours/finishes available
upon request


15A or 20A Single Receptacles

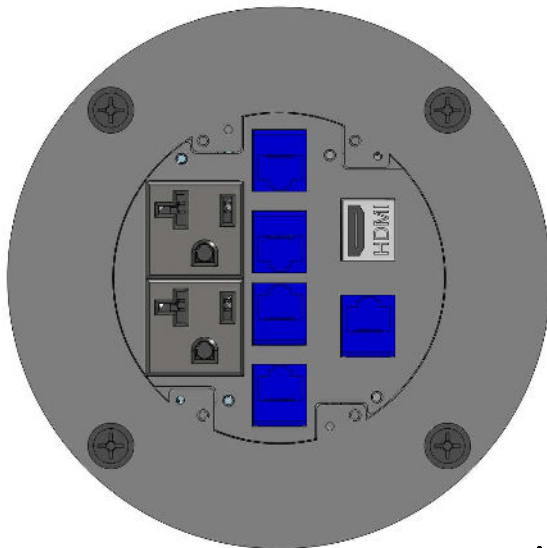
AHC-CED

(not supplied by Nocom)
Keystone or HDMI Connectors



MOI4-RES-REC-P2-C6

Ordering Information	Description:
Slab Thickness:	 LEW ELECTRIC FITTINGS COMPANY
Single Rec: <input type="checkbox"/> 15A <input type="checkbox"/> 20A	
Duplex Rec: <input type="checkbox"/> 15A <input type="checkbox"/> 20A	
Cover Type:	
Proprietary and Confidential	877-537-2019 www.lewelectric.com
The information contained in this drawing is the sole property of NOCOM. Any reproduction in part or as a whole without the written permission of NOCOM is prohibited.	DWG. No. MOI4-RES-REC-P2-C6



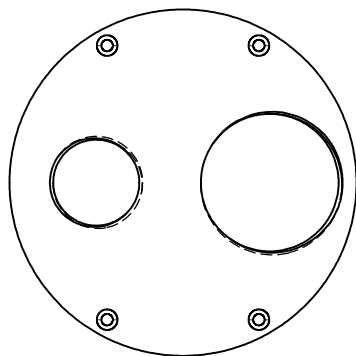
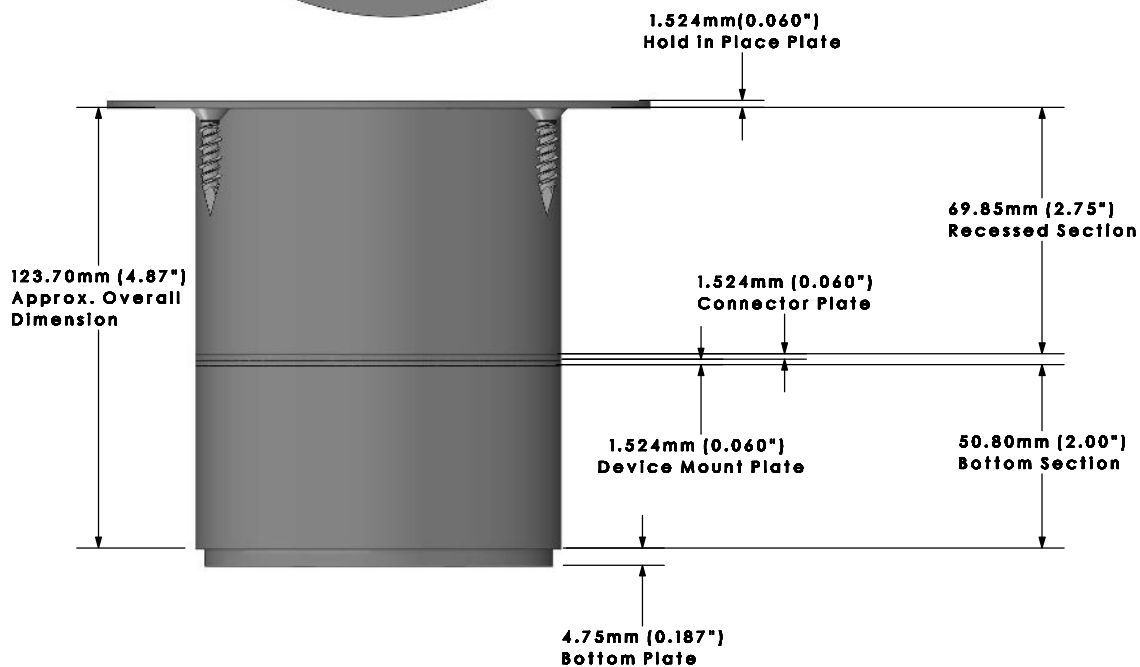
Configuration View

Power: x2

AV:

DP:


Comm: x6



Removable Bottom Plate

- NPS 0.750"

- NPS 1.250"

Ordering Information	Description:
Slab Thickness:	 LEW ELECTRIC FITTINGS COMPANY
Single Rec: <input type="checkbox"/> 15A <input type="checkbox"/> 20A	
Duplex Rec: <input type="checkbox"/> 15A <input type="checkbox"/> 20A	
Cover Type:	
Proprietary and Confidential	877-537-2019 www.lewelectric.com
The information contained in this drawing is the sole property of NOCOM. Any reproduction in part or as a whole without the written permission of NOCOM is prohibited.	DWG. No. MOI4-RES-REC-P2-C6