
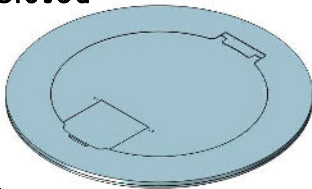


MOI4-RES-REC-P-C5

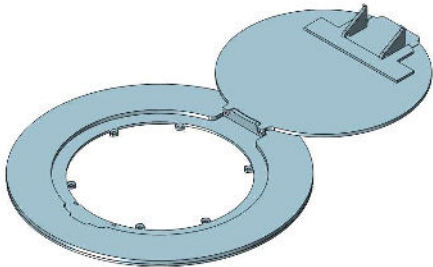
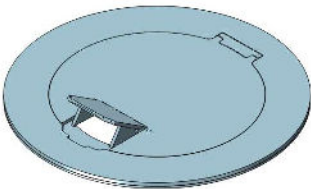
Ordering Information	Description:
Slab Thickness:	 LEW ELECTRIC FITTINGS COMPANY
Single Rec: <input type="checkbox"/> 15A <input type="checkbox"/> 20A	
Duplex Rec: <input type="checkbox"/> 15A <input type="checkbox"/> 20A	
Cover Type:	
Proprietary and Confidential The information contained in this drawing is the sole property of NOCOM. Any reproduction in part or as a whole without the written permission of NOCOM is prohibited.	877-537-2019 www.lewelectric.com
	DWG. No. MOI4-RES-REC-P-C5

Articulated Hinge Cover with Cable Exit Door (AHC-CED)

Cover Fully Closed



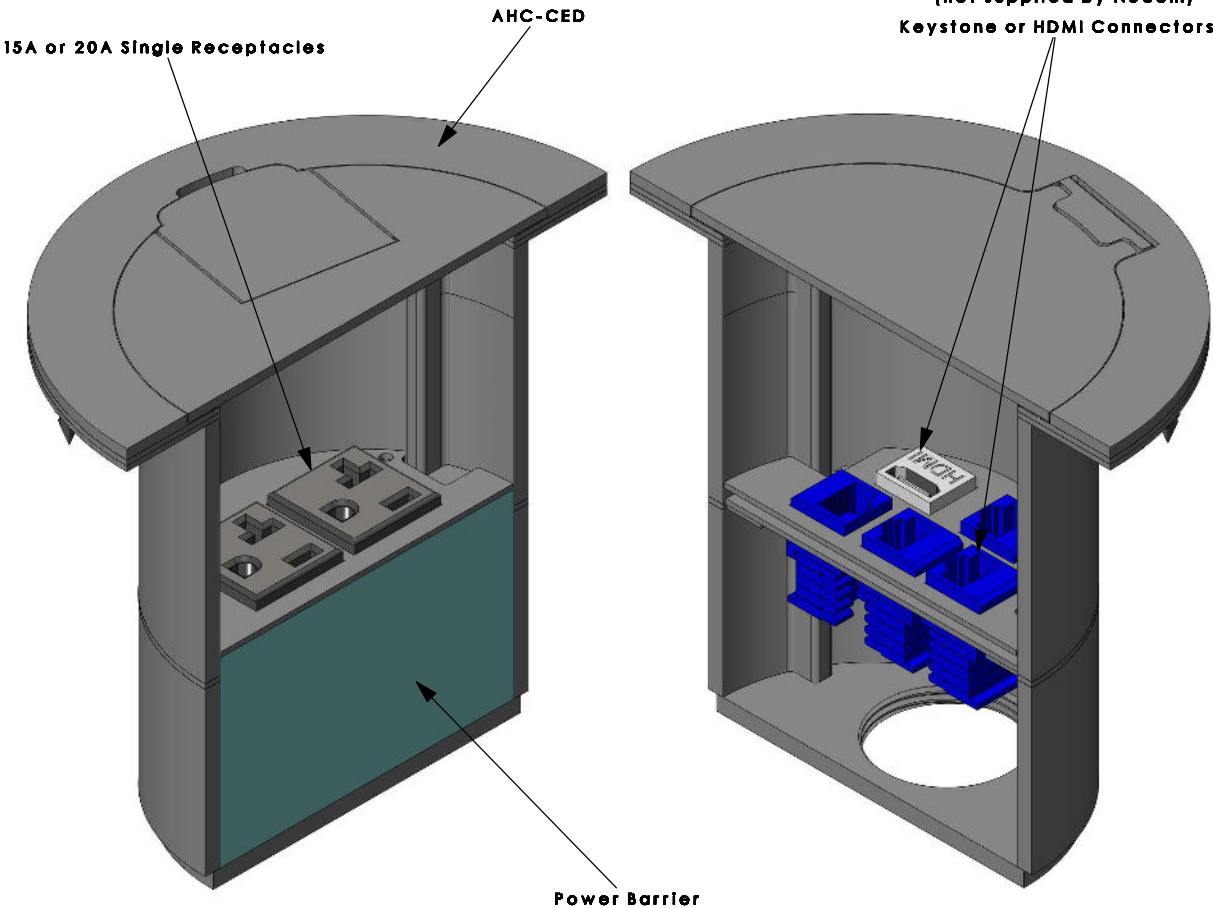
Cover CED Open




Cover Fully Open

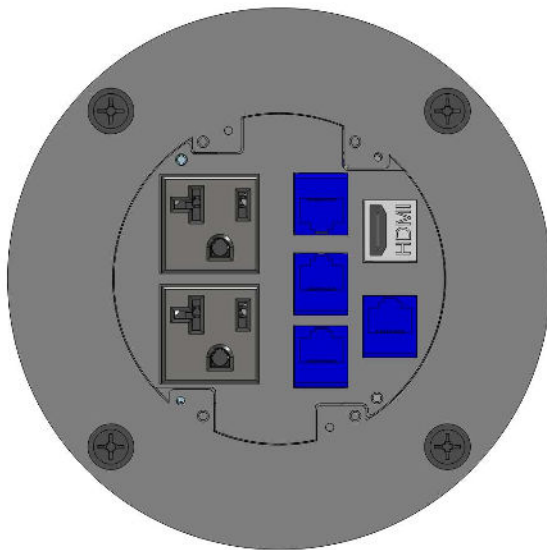
Cover Finishes

- Standard = Brushed Stainless Steel
- *Custom = Brushed Brass
or
Black Matte
- *Additional cost may apply
- *Other colours/finishes available upon request



MOI4-RES-REC-P-C5

Ordering Information	Description:
Slab Thickness:	 LEW ELECTRIC FITTINGS COMPANY
Single Rec: <input type="checkbox"/> 15A <input type="checkbox"/> 20A	
Duplex Rec: <input type="checkbox"/> 15A <input type="checkbox"/> 20A	
Cover Type:	
Proprietary and Confidential	877-537-2019 www.lewelectric.com
The information contained in this drawing is the sole property of NOCOM. Any reproduction in part or as a whole without the written permission of NOCOM is prohibited.	DWG. No. MOI4-RES-REC-P-C5



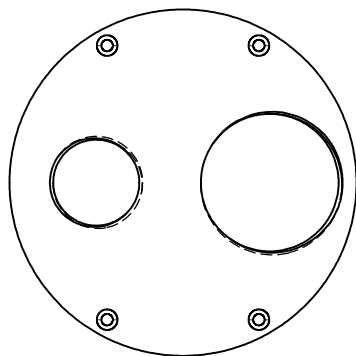
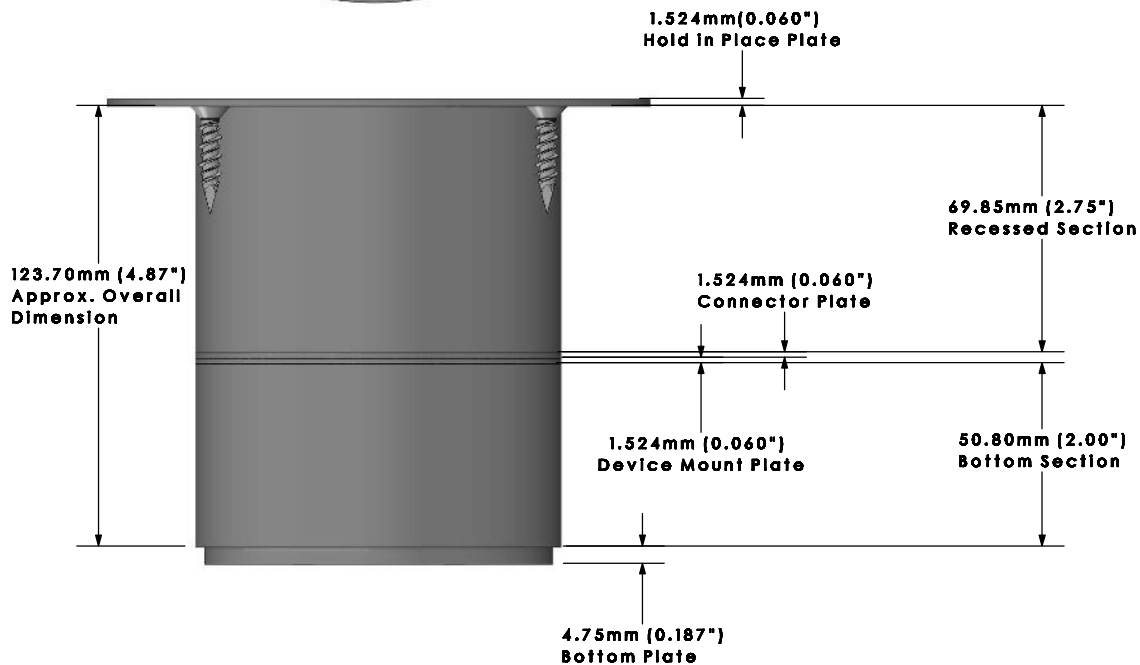
Configuration View

Power: x2

AV:

DP:


Comm: x5



Removable Bottom Plate

- NPS 0.750"

- NPS 1.250"

Ordering Information	Description:
Slab Thickness:	 LEW ELECTRIC FITTINGS COMPANY
Single Rec: <input type="checkbox"/> 15A <input type="checkbox"/> 20A	
Duplex Rec: <input type="checkbox"/> 15A <input type="checkbox"/> 20A	
Cover Type:	
Proprietary and Confidential	877-537-2019 www.lewelectric.com
The information contained in this drawing is the sole property of NOCOM. Any reproduction in part or as a whole without the written permission of NOCOM is prohibited.	DWG. No. MOI4-RES-REC-P-C5